

## M/V 'NORDIC'

Valid as of 18 November 2017



## Ship's particulars

### Registration

Call sign	PBGD
IMO number	9663001
Port of registry	Urk
Flag state	The Netherlands
Shipyard	Shipkits Yard
Year/Place of build	2013/Groningen
Class	Bureau Veritas
Class notation	I ✕ HULL ✕ MACH General cargo ship, Heavy Cargo, Unrestricted Navigation, ✕ AUT-UMS Approved for open top IMO fitted under deck Grain fitted

**P&I Club** RaetsMarine

### Tonnage

DWAT	3400 mt (summer draught)
DWCC	Abt. 3100 mt
Gross tonnage	2690
Net tonnage	893

### Dimensions

Length over all	92.90 m
Length between p.p.	84.99 m
Breadth over all	15.00 m
Summer draught	5.00 m
Depth main deck/upper deck	5.50 m/10.00 m
Height from keel to top mast	28.47 m

### Hold/hatches sizes

Number of holds/hatches	1/1
Hold capacity without tweendeck	Abt. 6.197 m <sup>3</sup> /218.862 ft <sup>3</sup>
Lower hold dimensions	53.90 x 12.00 m
Tweendeck dimensions	69.30 x 12.50 m
Weather deck dimensions	87.00 x 15.00 m (except accommodation)
Hold height	8.30 m
Tanktop/Tweendeck height	3.20/4.60 m
Tanktop floor surface	647 m <sup>2</sup>
Tweendeck deck floor surface	866 m <sup>2</sup>
Weatherdeck floor surface	1264 m <sup>2</sup>

Tanktop narrowing in fore  
and aft part.  
Tweendeck narrowing in  
fore part.

### Deck loads

Tanktop	15.0 mt/m <sup>2</sup>
Tweendeck steel area	12.0 mt/m <sup>2</sup>
Tweendeck panels	2.5 mt/m <sup>2</sup>
Hatch covers	3.5 mt /m <sup>2</sup>

### Container capacity

Hold & deck capacity 304 TEU

### Hatchcovers/Tweendecks

Type of hatchcovers	Pontoon hatches
Tweendeck panels	6 removable panels

### Propulsion/Maneuvering

Main engine	Wärtsilä 6L20
Propeller type	Variable pitch
Main engine output	1200 kW
Bow thruster	300 kW
Stern thruster	250 kW
Service speed	11.0 kn

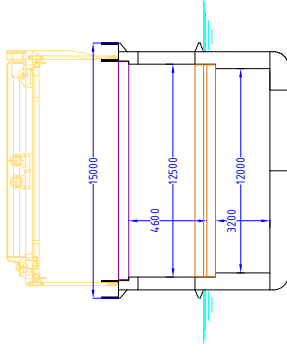
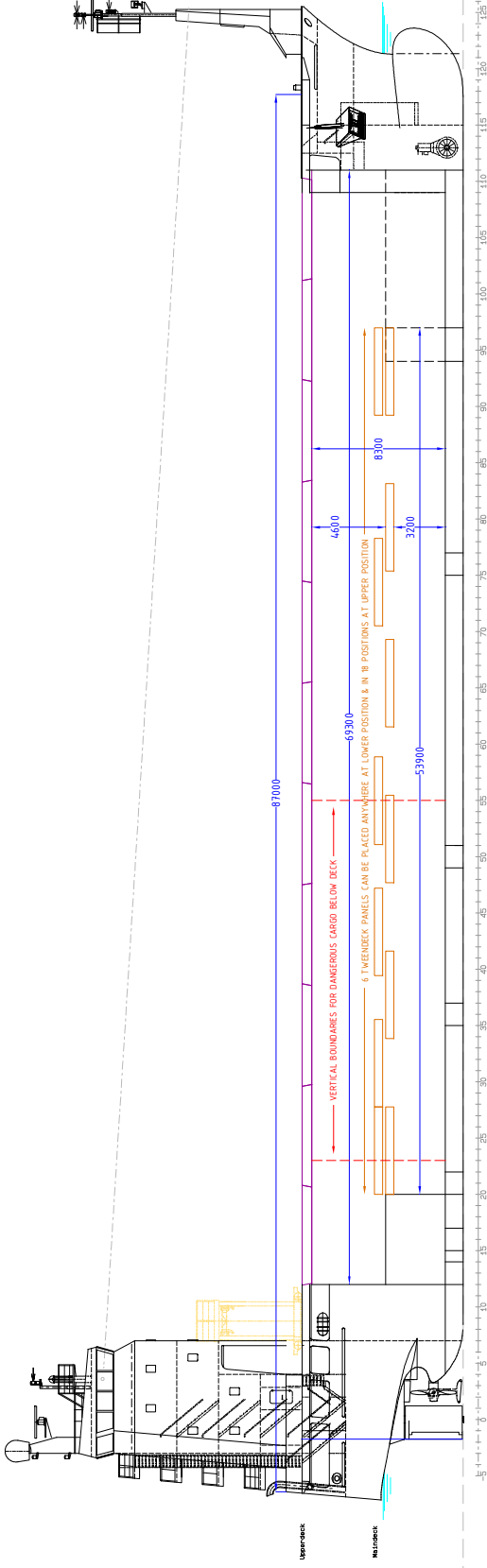
### Bunkers/Water capacity

MGO	230 m <sup>3</sup>
Fresh water	73 m <sup>3</sup>
Ballast water	1770 m <sup>3</sup>

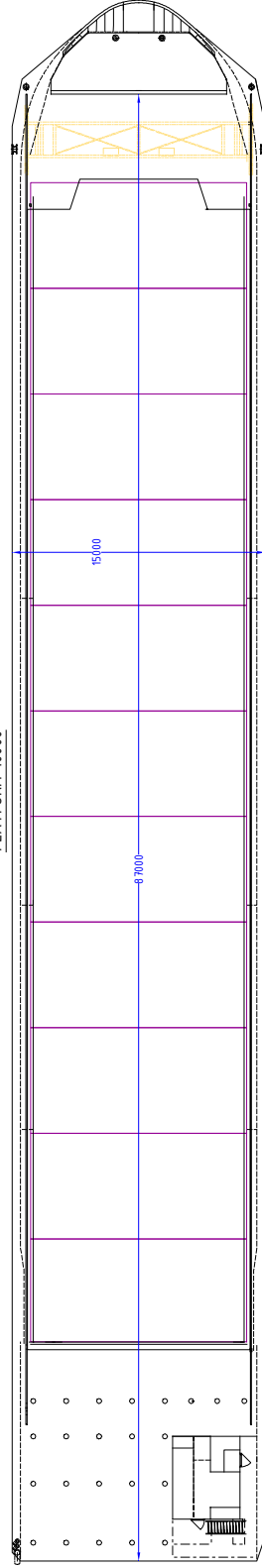
*All details are believed to be correct but  
without guarantee.*

OCEAN7 Projects ApS  
Jyllandsgade 19A  
DK-7000 Fredericia  
Denmark

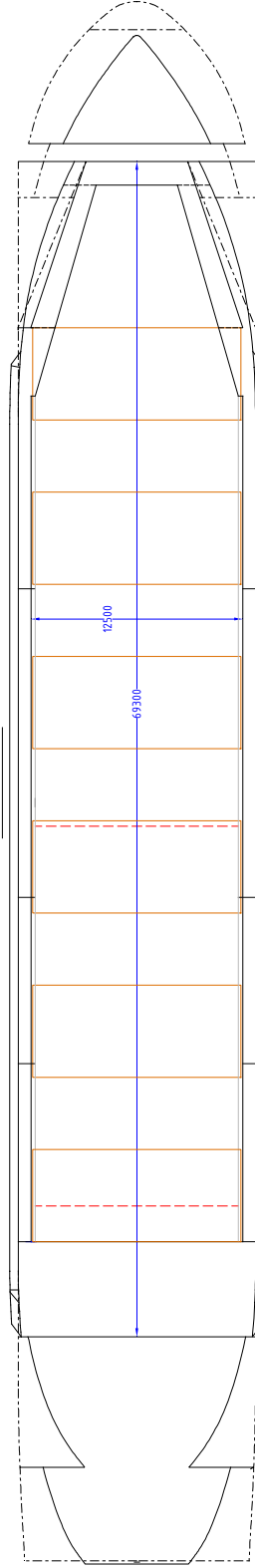
Phone: +45 7070 1311  
E-mail: denmark@ocean7projects.com



PLATFORM 10000



MAINDECK 5500



TANKTOP 1100

