

TRA-TYPE

LIFTING HEAVY
CARGO FOR
WORLDWIDE
TRANSPORT



BIG LIFT



TRA-TYPE



TRA-TYPE

TRAMPER, TRACER, TRANSPORTER

HATCH OPENINGS AND ALLOWABLE LOADS

HATCH OPENINGS	
weather deck	64.4 x 15.3 m
tween deck	64.4 x 15.3 m

ALLOWABLE LOADS	
weather deck hatch covers	3.0 t/m ²
tween deck hatch covers	3.0 t/m ²
tank top	15.0 t/m ²

FLOOR SPACE	
weather deck	1,330 m ²
tween deck	974 m ²
tank top	850 m ²

CRANES

2 x 275 mt SWL

COMBINABLE
500 mt

TROLLEY
6 mt SWL

PRINCIPAL DIMENSIONS

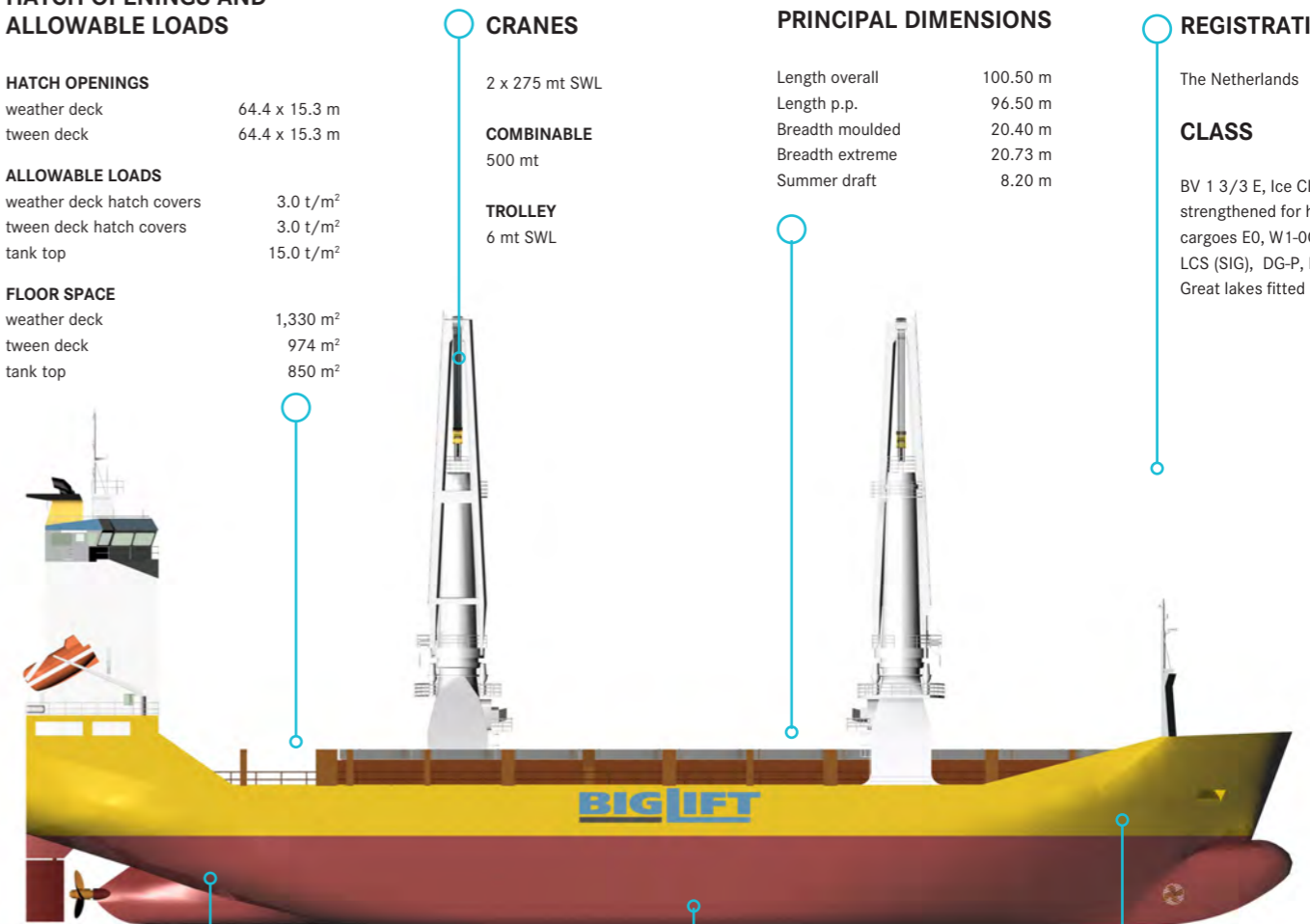
Length overall	100.50 m
Length p.p.	96.50 m
Breadth moulded	20.40 m
Breadth extreme	20.73 m
Summer draft	8.20 m

REGISTRATION

The Netherlands

CLASS

BV 1 3/3 E, Ice Class IC, strengthened for heavy cargoes E0, W1-OC, Grain, LCS (SIG), DG-P, DG-B, Great lakes fitted



MAIN ENGINE

Wärtsilä	7800 kW
Bowthruster	500 kW
Speed	16.0 kn

CAPACITY

Grain	10,530 m ³
Bale	9,720 m ³

DEADWEIGHT

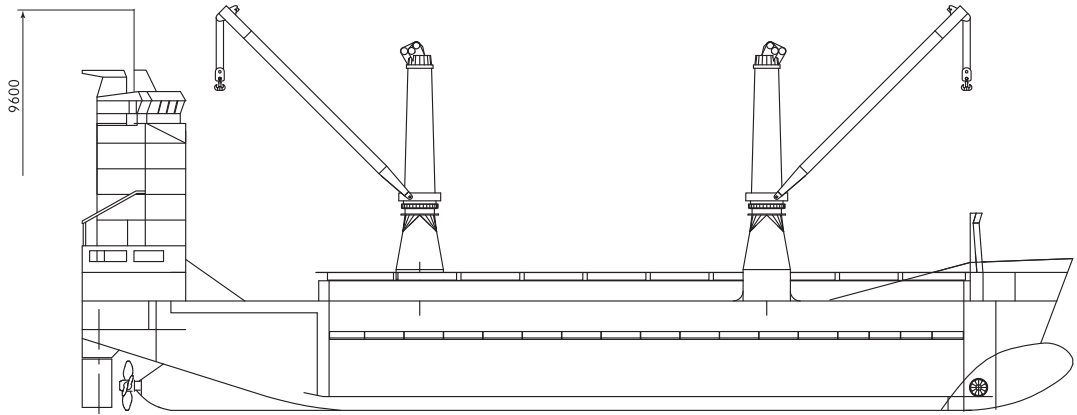
At Summer (Sea water) draft
8,600 mton inc. tween deck hatch covers, pillars

Due to their size the four Tra-type vessels excel in flexibility. With their shallow drafts and the smaller main dimensions, the vessels are able to enter ports and complete projects in the most remote places. This is further supported by the vessels being fitted for the Great Lakes.

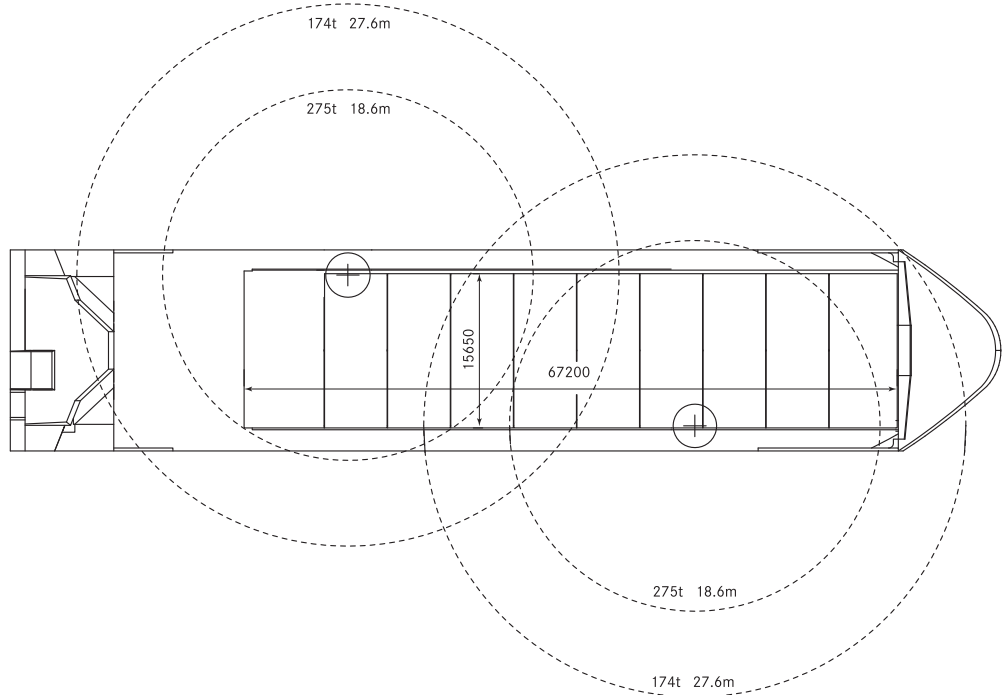
Despite their small size, their crane capacity is significant. The two 275 mt Huisman cranes, 500 mt combined, one located on each side, offer an impressive lifting capacity making the vessels very attractive for the smaller heavy lift and project cargoes.

With BigLift's experienced crew and office staff your cargo is being handled with the utmost care.

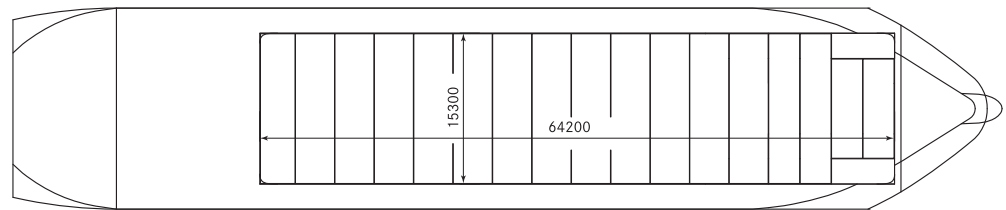
TRA-TYPE



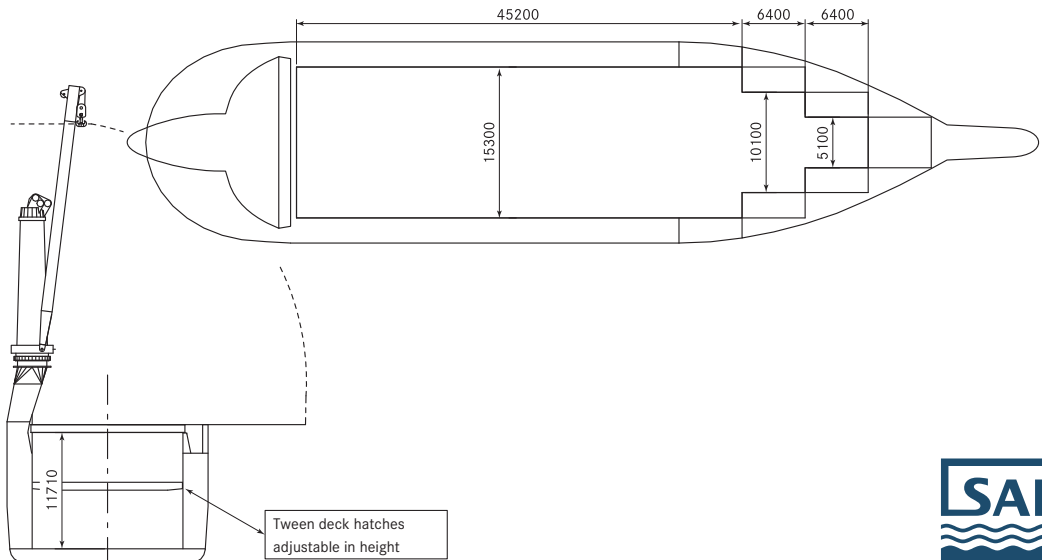
Side View



Weatherdeck



Tweendeck



Tanktop

Cross section

TRA-TYPE

Class	BV 1 3/3 E, C 1, Ice class 1A (Finnish-Swedish) General Cargo Carrier, Container Carrier, E0 W1-0C, Grain, LCS (SIG) DG-P, DG-B, Great lakes fitted		
Principal Dimensions	Length overall	100.50	m
	Length p.p.	96.50	m
	Breadth moulded	20.40	m
	Breadth extreme	20.73	m
	Summer draft	8.20	m
Deadweight	Summer (sea water)	8,600	mton at T=8.2 m
Tonnage		International	Panama
	GT	6,714	23,362
	NT	2,893	6,108
			cbm
			pc/ums
Capacity	Grain	10,530	m ³ tween deck not installed
	Bale	9,720	m ³ tween deck not installed
Floor space	Weather deck	1,330	m ²
	Tween deck	974	m ²
	Tank top	850	m ²
Hatch openings	Weather deck	64.4 x 15.3	m
	Tween deck	64.4 x 15.3	m
Heights in hold	Most tween deck covers adjustable in height		
	Total in hold	11.75	m tween deck not installed
Allowable loads	Weather deck hatch cover	3.0	t/m ² 9.00, 5.79 or 2.65 m
	Tween deck hatch cover	3.0	t/m ²
	Tank top	15	t/m ²
Cranes	Combinable to	500	mt SWL
	forward crane on starboard side	275	mt SWL
	Aft crane on port side	275	mt SWL
	both fitted with auxiliary hoist		
	Auxiliary hoist	6.0	mt SWL
Main engine	Wärtsilä 8L46B	7800	kW
	Bowthruster	500	kW
	Service speed	16.0	kN
Container capacity	621 TEU		

HAPPY TRA-TYPES

Tramper	Amsterdam	The Netherlands	1999
Tracer	Amsterdam	The Netherlands	1999
Transporter	Amsterdam	The Netherlands	1999

These particulars are believed to be correct, but without guarantee, and they must not be used as basis for Charter Parties or contracts without Owners' explicit written authority.



Radarweg 36	:	P.O. Box 2599	:	t. +31 (0) 20 - 448 83 00	:	info@bigliftshipping.com
1042 AA Amsterdam	:	1000 CN Amsterdam	:	f. +31 (0) 20 - 448 83 33	:	www.bigliftshipping.com



Radarweg 36
1042 AA Amsterdam

P.O. Box 2599
1000 CN Amsterdam

t. +31 (0) 20 - 448 83 00
f. +31 (0) 20 - 448 83 33

info@bigliftshipping.com
www.bigliftshipping.com