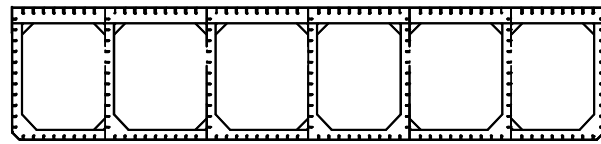
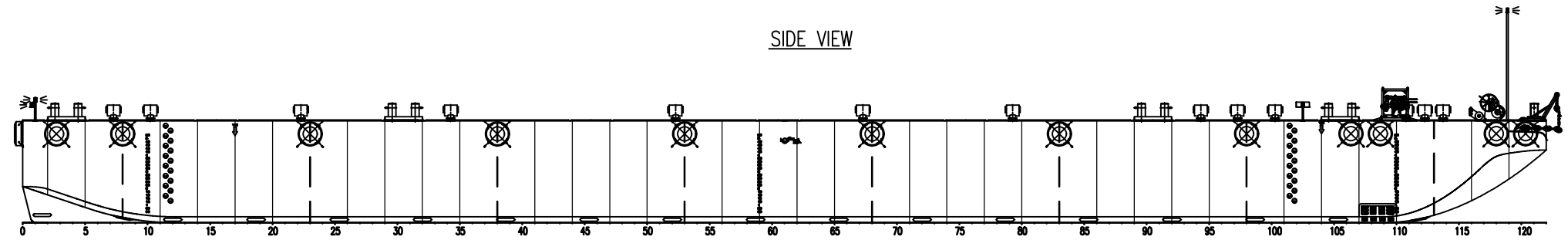


GENERAL ARRANGEMENT

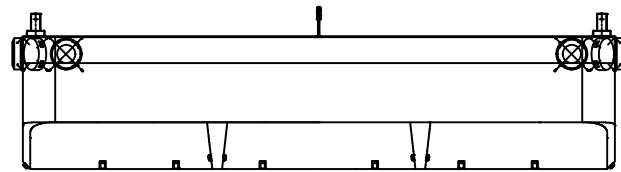
OUTLINE



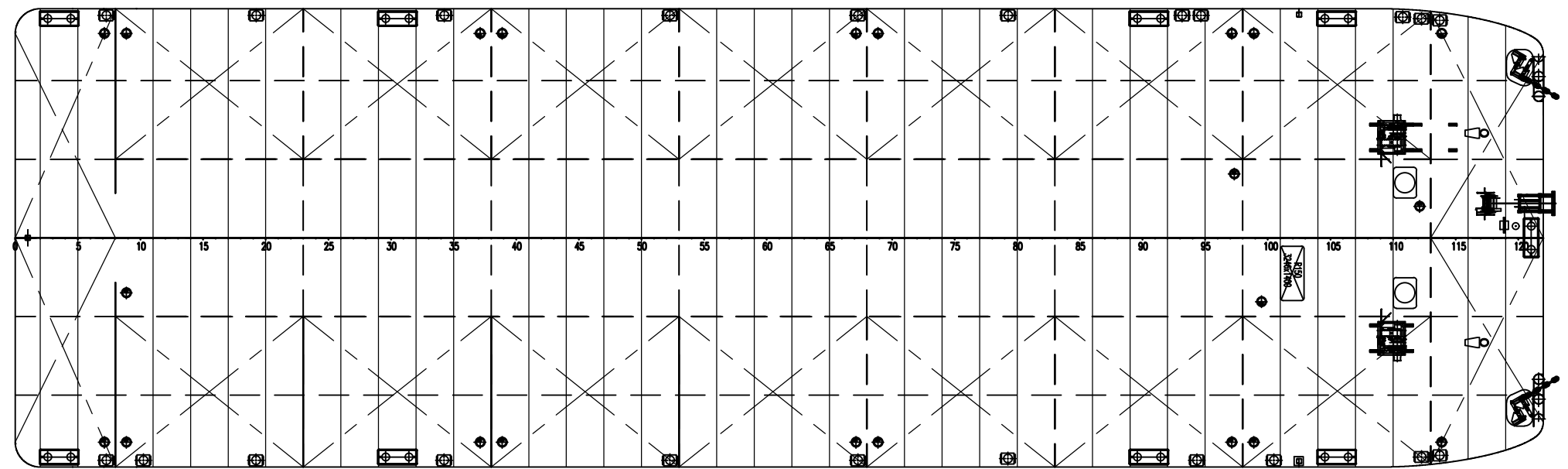
SIDE VIEW



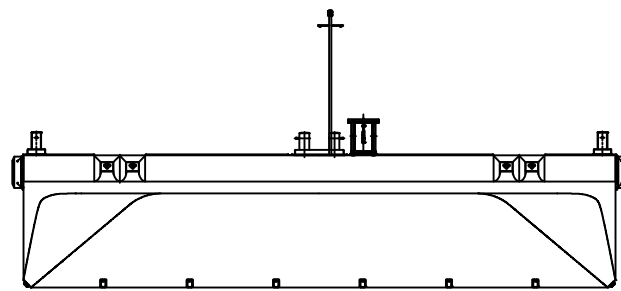
STERN VIEW



TOP VIEW



BOW VIEW



GENERAL PARTICULARS 9127-1/-2

Type Seagoing Ro-Ro pontoon
 Class Lloyd's 100+AT, Pontoon IWS
 Build 2012
 Port of registry Newcastle upon Tyne
 Flag British
 Length oa 91.500 m
 Width oa 27.400 m
 Depth mid 6.100 m
 Draft max at sea (base line) 4.900 m
 Deck capacity 20.00 t/m²
 Lightweight (approved by DNV) 2013 t
 Deadweight 9969 t
 Frame Spacing 2250 mm
 Pumproom 2 x 400 m3/hr

Deckcapacity and pointloads:

Overall deckstrength: 20T per m2
 Strongpoint crossing of 2 bulkheads: 310T
 Strongpoint crossing of shell and bulkhead: 240T
 Strongpoint webframe between bulkheads: 105T
 Strongpoint crossing of webframes and bulkheads: 385T
 Strongpoint crossing of webframes and shells: 340T

Ballasting equipment:

Ballast pumps: 2 x 400m3/hr
 Generator: Caterpillar C4.4TA, 94EKW 118kVa

E	-	-	-
D	-	-	-
C	-	-	-
B	-	-	-
A	-	-	-
O	FIRST ISSUE	AB	2013 08 29
NO.	REMARKS	DRAWN	DATE

Approved: _____ Date: _____
 Approved: _____ Date: _____

Mooring-/Anchor arrangement:

Emergency anchor: 1 x HHP fully balanced anchor (1305KG)
 Anchor wire: 190m lenght steel wire rope
 Anchor winch: Electrically operated, 51T brake holding
 Nom. pull 10.5T 1st layer. Locally operated
 Bollards: Barge is outfitted with 9 x double bollards.
 One at the bow and four on each side.
 Fenders: Side hull protected by rubber "aircraft" tyres.

Muller Zwaar Transport BV

Merwekade 82-83, 3311TH Dordrecht
 PObox 400, 3300AK Dordrecht
 Phone: +31 (0)78 639 2000
 Fax: +31 (0)78 639 2019
 E-mail: engineering@muller-dordrecht.nl



NOTICE : This drawing and the information it contains are the property of Muller Zwaar Transport BV and may not be reproduced or used in part or in whole for any purpose except by written permission of this company.

Towing arrangement:

Lloyd's certified Smit towing bracket located forward (recessed).
 Certified towing bridle consisting of 2 x stud link chain legs coupled to barge at port & starboard Smit towing brackets. Further 1 x Delta plate with shackles. Retriever winch is located on foredeck coupled to the delta plate.

Emergency towing arrangement:

Lloyd's certified Smit towing bracket connected to a steel wire rope leading from bow to stern of barge. Further polyprop multiplaid floating rope pennant, coupled to steel wire, fitted with floating rec. buoy.

**PONTOON 9127
GENERAL ARRANGEMENT**

Principal **MULLER ZWAAR TRANSPORT**
DORDRECHT - THE NETHERLANDS

Project **FLEET** Sheet 1

Dwg. **11.001** Nr. of Sh. 1

Projection Scale 1 : 350
 Drawn AB
 Date 2013 08 28
 Size **A3**