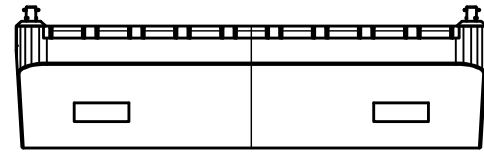
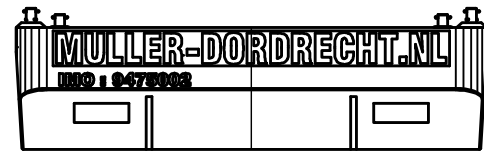


GENERAL ARRANGEMENT

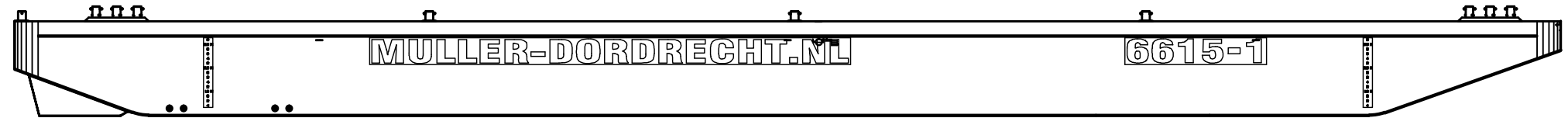
BOW VIEW



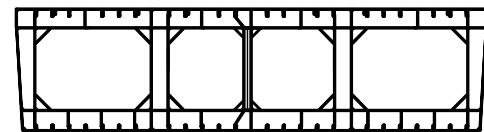
STERN VIEW



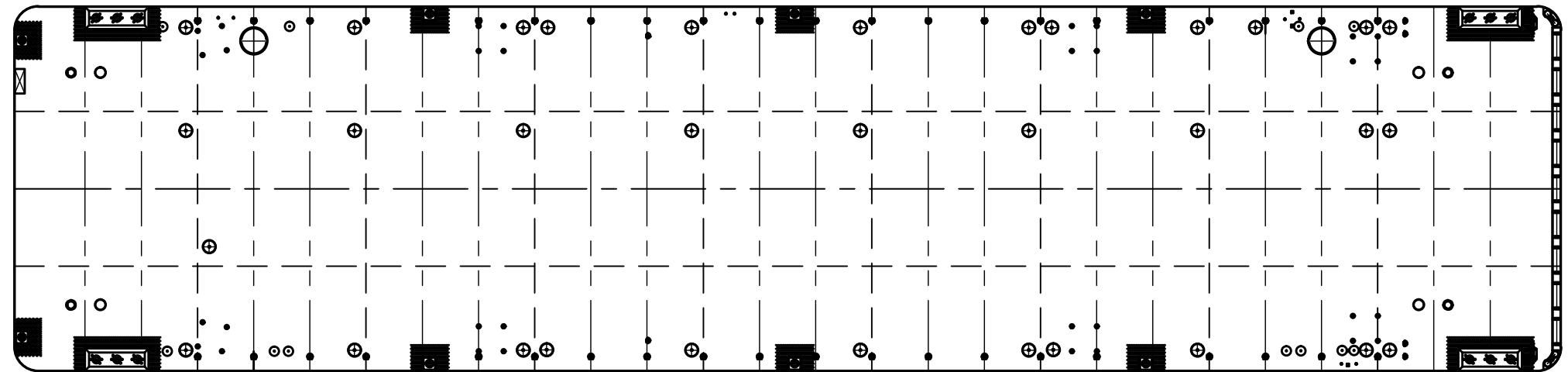
SIDE VIEW



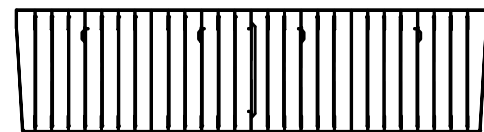
WEB FRAME



TOP VIEW



BULKHEAD



GENERAL PARTICULARS 6615-1

Type	Seagoing Ro-Ro pontoon
Class	Lloyds Register
Imo no	9475002
Port of registry	Dordrecht
Flag	Netherlands
Length oa	66.04 m
Width oa	15.50 m
Depth mld	4.00 m
Draft baseline	3.13 m
Deck capacity	10.00 t/m ²
Lightweight	559 t
Deadweight	2993 t
Net tonnage	309 t
Gross tonnage	1033 t

NOTE: Particulars of unit believed to be correct but not guaranteed and are subject to change

E	-	-	-
D	-	-	-
C	-	-	-
B	-	-	-
A	NT & GT added	JDJ	13-05-2015
0	FIRST ISSUE	JV	03-09-2010
NO.	REMARKS	DRAWN	DATE
Approved:	Date:		
Approved:	Date:		

Muller Zwaar Transport BV

Merwekade 82-83, 3311TH Dordrecht
 PObox 400, 3300AK Dordrecht
 Phone: +31 (0)78 639 2000
 Fax: +31 (0)78 639 2019
 E-mail: engineering@muller-dordrecht.nl



PONTOON 6615-1
 GENERAL ARRANGEMENT

Principal MULLER ZWAAR TRANSPORT
 DORDRECHT - THE NETHERLANDS

Project 6615-1 Sheet 1

Dwg. 11.001 Nr. of Sh. 1

Projection Scale 1 : 250
 Drawn JV
 Date 03-09-2010
 Size A3

NOTICE : This drawing and the information it contains are the property of Muller Zwaar Transport BV and may not be reproduced or used in part or in whole for any purpose except by written permission of this company.