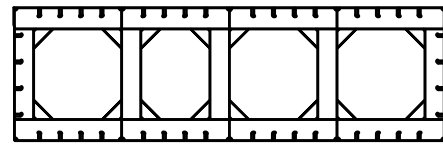


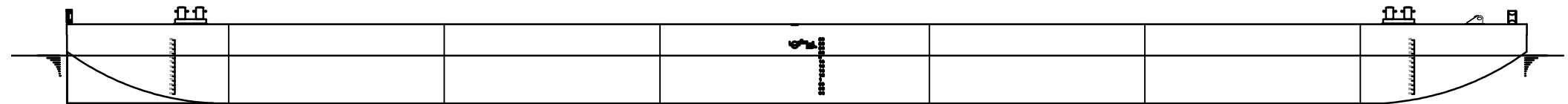
# GENERAL ARRANGEMENT

FOR INFORMATION ONLY

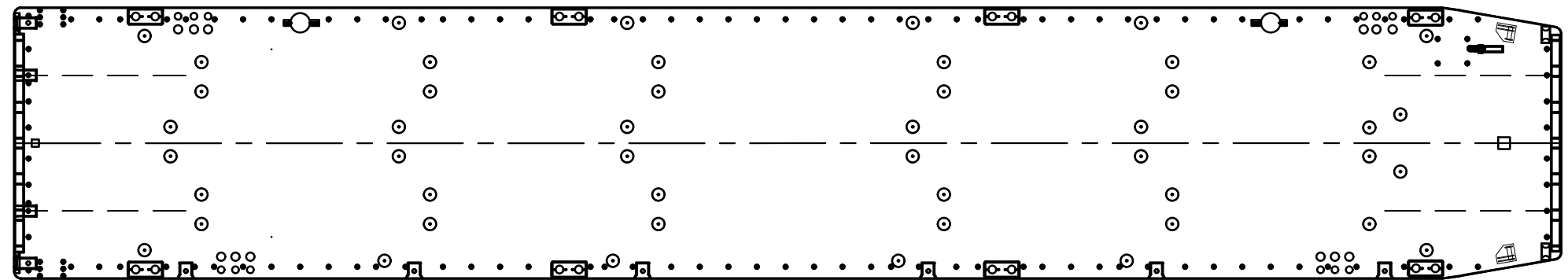
SECTION VIEW



SIDE VIEW



TOP VIEW



## GENERAL PARTICULARS 6511-1 -2

Type Seagoing Flat-top pontoon  
 Class Lloyd's Register  
 Port of registry Schiedam  
 Flag Netherlands  
 Length oa 65.00 m  
 Width oa 11.36 m  
 Depth mld 3.50 m  
 Draft (max) 2.60 m  
 Deck capacity 10.00 t/m<sup>2</sup>  
 Lightweight 450 t  
 Deadweight 1.480 t  
 Gross tonnage 227 t

NOTE: Particulars of unit believed to be correct but not guaranteed and are subject to change

E	-	-	-
D	-	-	-
C	-	-	-
B	-	-	-
A	-	-	-
0	FIRST ISSUE	AB	01-02-2017
NO.	REMARKS	DRAWN	DATE
Approved:	Date:		
Approved:	Date:		

**Muller Zwaar Transport BV**

Merwekade 82-83, 3311TH Dordrecht  
 PObox 400, 3300AK Dordrecht  
 Phone: +31 (0)78 639 2000  
 Fax: +31 (0)78 639 2019  
 E-mail: engineering@muller-dordrecht.nl



**PONTOON 6511**  
 GENERAL ARRANGEMENT

Principal **MULLER ZWAAR TRANSPORT**  
 DORDRECHT - THE NETHERLANDS

Project		Sheet	1
Dwg.	11.001	Nr. of Sh.	1
Projection	Scale	1 : 200	Size
	Drawn	AB	A3
	Date	01-02-2017	

NOTICE : This drawing and the information it contains are the property of Muller Zwaar Transport BV and may not be reproduced or used in part or in whole for any purpose except by written permission of this company.