

1

2

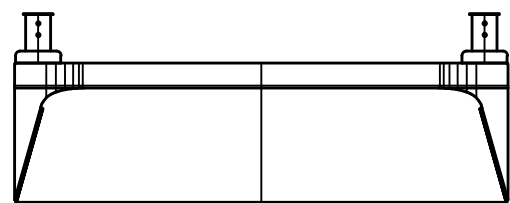
3

4

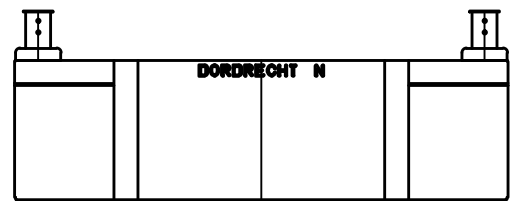
5

6

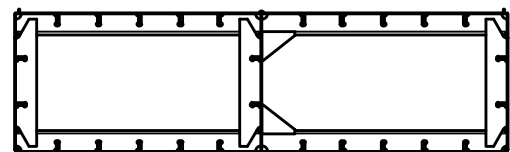
BOW VIEW



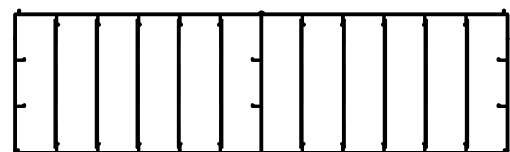
STERN VIEW



WEB FRAME

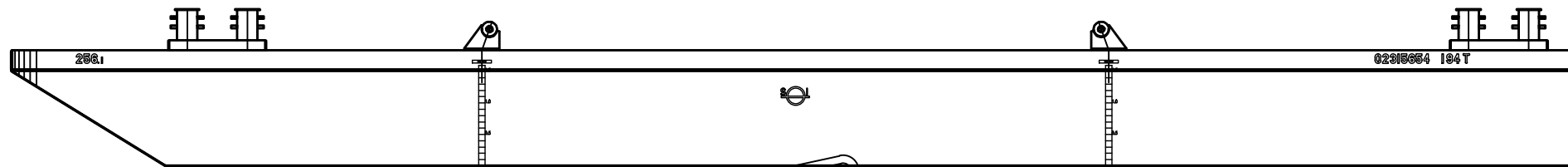


BULKHEAD



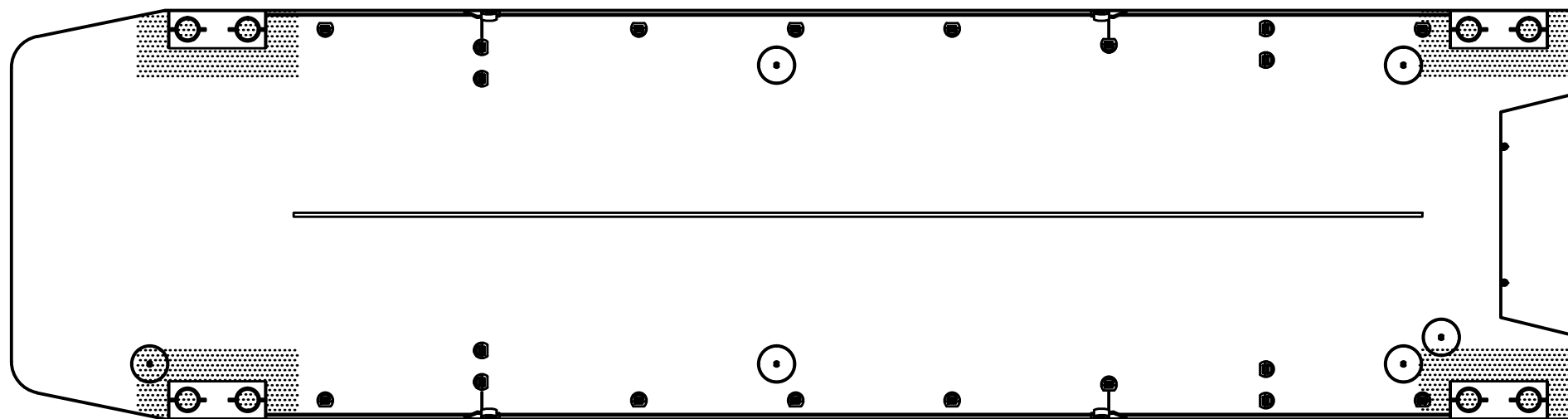
GENERAL ARRANGEMENT

SIDE VIEW



FOR INFORMATION ONLY

TOP VIEW



GENERAL PARTICULARS 256-1

Type	Test pontoon
Class	I/W
Imo no	n/a
Port of registry	Dordrecht
Flag	Netherlands
Length oa	25.03 m
Width oa	6.52 m
Depth mld	1.82 m
Draft max. inland	1.64 m
Deck capacity	n/a t/m ²
Lightweight	61.7 t
Deadweight	194 t

NO.	REMARKS	DRAWN	DATE
E	-	-	-
D	-	-	-
C	LAYOUT	JV	2015-05-19
B	KICK-RAIL	JV	20-01-2012
A	DECK-LAYOUT CHANGED	JV	19-07-2011
0	FIRST ISSUE	JV	14-07-2010
Approved:	Date:		
Approved:	Date:		

NOTE: Particulars of unit believed to be correct but not guaranteed and are subject to change

Muller Zwaar Transport BV

Merwekade 82-83, 3311TH Dordrecht
 PObox 400, 3300AK Dordrecht
 Phone: +31 (0)78 639 2000
 Fax: +31 (0)78 639 2019
 E-mail: engineering@muller-dordrecht.nl

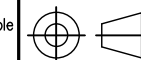


PONTOON 256-1 GENERAL ARRANGEMENT

Principal MULLER ZWAAR TRANSPORT
DORDRECHT - THE NETHERLANDS

Project	256-1	Sheet	1
Dwg.	11.001	Nr. of Sh.	1
Projection	Scale 1 : 100	Size	A3
	Drawn JV		
	Date 14-07-2010		

NOTICE : This drawing and the information it contains are the property of Muller Zwaar Transport BV and may not be reproduced or used in part or in whole for any purpose except by written permission of this company.



1

2

3

4

5

6